



Pump control

Taurage's Water Station Renovation

Management system modernization

Customer introduction

Vilakra has been partnering with Schneider Electric for many years. The company was Schneider's representative in Lithuania for more than 20 years, and in 2014, they joined Schneider's Alliance system integrator partner program. They work primarily in the Water & Wastewater sector, as well as in utilities, and also act as a panel builder.

Customer's challenge

This project is the first step in the modernization of the water station in the small Lithuanian city of Taurage. Their main challenge was to ensure this modernization was invisible, with no downtime, while

maintaining the reliability of the data to allow the continuous control of the station.

Solution by Schneider Electric

Schneider Electric proposed a complete solution that would allow the customer to count on a reliable power supply, reduce their energy cost and include data management.

Schneider Electric dipped into its wide range of electrical distribution and process automation products to meet the requirements:

- Visualization of all the equipment data and reports
→ Vijeo Citect SCADA

- Bore wells control and data collection
→ Modicon M340, Twido
- Monitoring and management of the power distribution equipment
→ SEPAM, Compact NSX, Twido
- Ethernet long distance communication network implementation
→ 100 base-FX fiber optics

This solution consisted of:

- > 1 Modicon M340
- > 400+ Vijeo Citect SCADA tags
- > 5 Twido
- > 2 Sepam
- > Litgrid
- > 2+ km of optical fiber

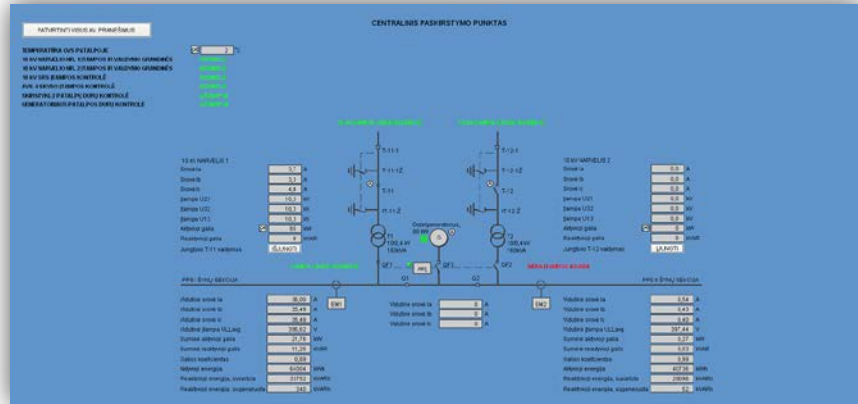
It allowed for a power recovery of not more than 30s in the event of an outage.

Benefits

As a long-time partner, Vilakra was already very experienced in working with Schneider Electric. This trust and the proven quality of Schneider Electric's products and support made selecting a Schneider Electric solution the clear choice for their project.

The Schneider Electric solution allowed minimal downtime thanks to the high reliability level of the power supply. In case of a power outage, the recovery time for both feeders of the water station would be 30 seconds by running a diesel generator.

This modernization project enabled the end user to optimize and control the bore well during the day and the night by running it upon request with, as a result, reducing their energy costs.



Bore well supervision

The end user saves energy, as well, because they are now able to better predict the operations, using the data management solution. This enables lifecycle optimization, thus making the installation more sustainable.

Project at a glance

Project type: Water & Wastewater

Location: Lithuania

Main products and systems:

- Vijeo Citect SCADA
- Modicon M340, Twido
- SEPAM, Compact NSX
- 100Base-FX fiber optics

Customer benefits:

- Reduced downtime
- Energy cost reduction
- Lifecycle cost control

